

MDI ESM Series

STORAGE MANAGEMENT FOR EMAIL

KEY FEATURES

- Self Contained Systems
- Vendor Neutral
- Appliance Simple
- Economical
- Automated Message Capture
- Spam Protection
- Ease of Administration
- Search & Replay
- Stand In Mail Services
- Remote Access

“Innovative E-mail Storage for Small, Medium and Large Organizations”

MDI E-Mail Storage Manager

Today's organizations rely on email as a primary form of business communication. Therefore, it's essential that systems remain running, protected and compliant at all times. Current regulatory and legal requirements have made protecting and preserving email a top priority. By automating and standardizing e-mail storage management, records retention, and integrating compliant storage systems, you can ensure compliance with external regulations as well as internal policies for securing and managing information.

If you haven't yet considered potential solutions for archiving

email, it's time to start. Providing adequate storage for the escalating volume of email and attachments continues to cause problems. Limiting mailbox size is not an effective solution, and creating local archives on the network is unreliable and time consuming. Failure to implement a flexible, manageable solution can result in significant business liabilities.

Our automated email archiving solution has the potential to pay

for itself by avoiding compliance-related fines while optimizing the use of storage resources and employees' time. The MDI ESM (*Email Storage Management*) Systems generate additional payback by optimizing the amount of storage required by the organization and optionally providing migration to multiple storage devices to satisfy access and retention requirements.

E-mail Archiving is “Storage Management for E-mail”.



The ES-Mail Solution

The MDI ESM Series models provide a cost effective solution which is quickly and easily implemented without requiring installation or configuration of software applications. The device is connected via standard Ethernet connection and within minutes can be configured to capture, index and store all incoming and outgoing messages.

By capturing and storing all messages in an automated and

controlled manner, user mailbox quotas can be reduced allowing the exchange server to function more efficiently without limiting message capacity.

Users can search and view their email archive via a web browser or by a plug in to Microsoft Outlook and can compose, reply to or forward emails, even if their e-mail server is down. Messages can also be “replayed” and then appear again in the users Inbox.

ESM *E-Mail Storage Manager* Models store the messages to any network storage device while the *ESA Email Storage Archiver* models include integrated high performance, high capacity RAID storage.

The ESM 500 provides support for up to 500 users, while the ESM 1000 and 2500 can support up to 1000/ 2500 users and 400 million messages. All models support multiple vendor independent email systems, and are integrated into a 1U chassis.

A single system can now archive messages from Exchange 2007 servers as well as messages from previous versions of Exchange and other Vendor's email applications.

Capture

Creates a searchable index record of each message.

Archives messages to file storage using CIFS, NFS or iSCSI

Retains a searchable full text index of message body content on the network share

A replicate of each index record—a record of birth (RoB) file is stored on the network share for back-up and synchronization purposes

The NorthSeas Archive contains both current and older messages.

Spam Protection

Address Verification confirms that recipients listed on a message are valid.

Sender Verification confirms that the sender listed on a message is valid

Greylisting temporarily delays acceptance of a message from an unknown domain

Spammer Tarptitting slows processing of incoming email from suspected attackers

Automatic Whitelisting whitelists recipients of an outbound message and any user from the responding host.

Administration

Remote Firmware updates when available

Threshold Alerts automatically alert system administrators when storage levels are reached.

Prune Archive deletes batches of messages older than specified from the archive and database

Move Archived Messages moves messages to external storage but retains database records

Index Synchronization synchronizes the databases on separate appliances.

Search & Replay

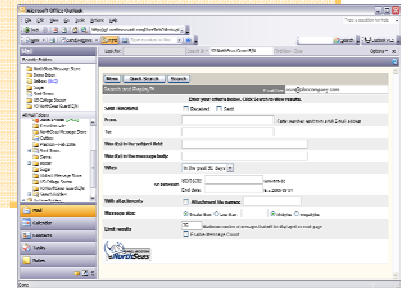
The simple to use, browser based Search & Retrieve application can be accessed using a browser or Outlook Folder, and gives users self service access to their archived messages.

Search & Replay offers two convenient search options:

Quick Search - Search by Received or Sent,; From; To; Words in the Subject Field; Pre-set Data Ranges

Advanced Search - Words in the message Body; Specific Dates and Date Ranges; Message Size; Attachments and Attachment Names.

Stand in Mail Services allow users to compose, reply to and forward messages externally, even when the mail server is down.



Caption describing picture or graphic.

ESM Series Models

ESM 500

1 - 500 Users
1 U Rack Mount Chassis
250 GB RAID 1 Database Store
GB Ethernet
Intel Core Duo 1.8 GHz
2 MB Cache

MSRP \$5995.00

ESM 1000

500 - 1000 Users
1 U Rack Mount Chassis
250 GB RAID 1 Database Store
GB Ethernet
Intel Core Duo 1.8 GHz
2 MB Cache

MSRP \$11,995.00

ESM 2500

1000 - 2500 Users
1 U Rack Mount Chassis
500 GB RAID 1 Database Store
GB Ethernet
Intel Core Duo 1.8 GHz
2 MB Cache

MSRP \$17,995.00

MDI ESM SERIES

NorthSeas



euroson >>

EUROSON AMERICA, INC.
PHONE: 1.800.423.1122
SALES@EUROSONAMERICA.COM
WWW.EUROSONAMERICA.COM

Inside Story Headline



Caption describing picture or graphic.

ports. While your main goal of distributing a newsletter might be to sell your product or service, the key to a successful newsletter is making it useful to your readers.

A great way to add useful content to your newsletter is to develop and write your own articles, or include a calendar of upcoming events or a special offer that promotes a new product.

You can also research articles or find “filler” articles by accessing the World Wide Web. You can write about a variety of topics but try to keep your articles short.

Much of the content you put in your newsletter can also be used for your Web site. Microsoft Publisher offers a simple way to convert your newsletter to a Web publication. So, when you’re finished writing your newsletter, convert it to a Web site and post it.

“To catch the reader’s attention, place an interesting sentence or quote from the story here.”

This story can fit 150-200 words.

One benefit of using your newsletter as a promotional tool is that you can reuse content from other marketing materials, such as press releases, market studies, and re-

This story can fit 100-150 words.

The subject matter that appears in newsletters is virtually endless. You can include stories that focus on current technologies or innovations in your field.

You may also want to note business or economic trends, or make predictions for your customers or clients.

If the newsletter is distributed internally, you might comment upon new procedures or improvements to the business. Sales figures or earnings will show how your business is growing.

Some newsletters include a column that is updated every issue, for instance, an advice column, a book review, a letter from the president, or an editorial. You can also profile

new employees or top customers or vendors.

Inside Story Headline

This story can fit 75-125 words.

Selecting pictures or graphics is an important part of adding content to your newsletter.

Think about your article and ask yourself if the picture supports or enhances the message you’re trying to convey. Avoid selecting images that appear to be out of context.

Microsoft Publisher includes thou-

sands of clip art images from which you can choose and import into your newsletter. There are also several tools you can use to draw shapes and symbols.

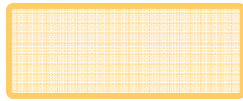
Once you have chosen an image, place it close to the article. Be sure to place the caption of the image near the image.



Caption describing picture or graphic.



Organization



This would be a good place to insert a short paragraph about your organization. It might include the purpose of the organization, its mission, founding date, and a brief history. You could also include a brief list of the types of products, services, or programs your organization offers, the geographic area covered (for example, western U.S. or European markets), and a profile of the types of customers or members served.

It would also be useful to include a contact name for readers who want more information about the organization.

Business Name

Primary Business Address

Your Address Line 2

Your Address Line 3

Your Address Line 4

Phone: 555-555-5555

Fax: 555-555-5555

E-mail: someone@example.com

Your business tag line here.



Back Page Story Headline

This story can fit 175-225 words.

If your newsletter is folded and mailed, this story will appear on the back. So, it's a good idea to make it easy to read at a glance.

A question and answer session is a good way to quickly capture the attention of readers. You can either compile questions that you've received since the last edition or you can summarize some generic questions that are frequently asked about your organization.

A listing of names and titles of managers in your organization is a good way to give your newsletter a personal touch. If your organization is small, you may want to list the names of all employees.

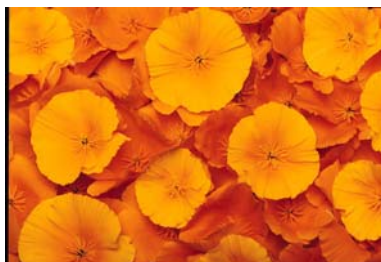
If you have any prices of standard products or services, you can include

a listing of those here. You may want to refer your readers to any other forms of communication that you've created for your organization.

You can also use this space to remind readers to mark their calendars for a regular event, such as a breakfast meeting for vendors every third Tuesday of the month, or a biannual

charity auction.

If space is available, this is a good place to insert a clip art image or some other graphic.



Caption describing picture or graphic.